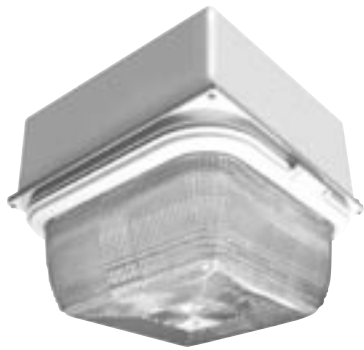


# UCL-SM



## Features

- Rugged die-cast aluminum ballast housing.
- Quick-disconnect for mounting of ballast housing to ceiling prior to installing optical assembly.
- Vertical lamp with ground serviceability.
- 400 watt approved for mounting to non-combustable surface only.
- TGIC thermoset white polyester powder paint finish. For other colors consult factory.

*Perfect for high-angle brightness in car wash and bay-type applications.*

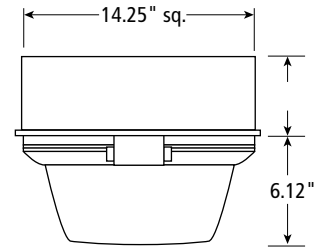
CANOPY

## Ordering Information

**Example:** **UCL-SM** - **400H** - **8** - **WH** - **L**  
Series Lamp/Watt. Voltage Color

- 1 Series**  
UCL-SM = Surface (only available with UCO-1 optics)
- 2 Lamp Type/Wattage**  
Metal Halide  
H400  
Pulse Start  
P320  
P250

- 3 Voltage**  
8 = Quad-Tap
- 4 Color**  
WH = White
- Options**  
L = Lamp (included)



# UCL-SG6



## Features

- Square, formed and welded aluminum housing and door.
- Textured sag glass lens sealed to door and optical chamber with silicone gasket.
- Precision spun reflector.
- Tool-less twist-lock relamping feature.
- Power cut-off switch when door is in open position
- TGIC thermoset white polyester powder paint finish. For other colors, consult factory.

## Ordering Information

**Example:** **UCL-SG6** - **320P** - **8** - **WH** - **UCL-SG-HS** - **L**  
Series Lamp/Watt. Voltage Color Options

- 1 Series**  
UCL-SG6 = Surface Mount Stargate
- 2 Lamp Type/Wattage**  
Metal Halide  
H400  
Pulse Start  
P320  
P250

- 3 Voltage**  
8 = Quad-Tap
- 4 Color**  
WH = White
- 5 Options**  
L = Lamp (included)  
UCL-SG-HS = House-Side Shield/Reflector (field installed)

